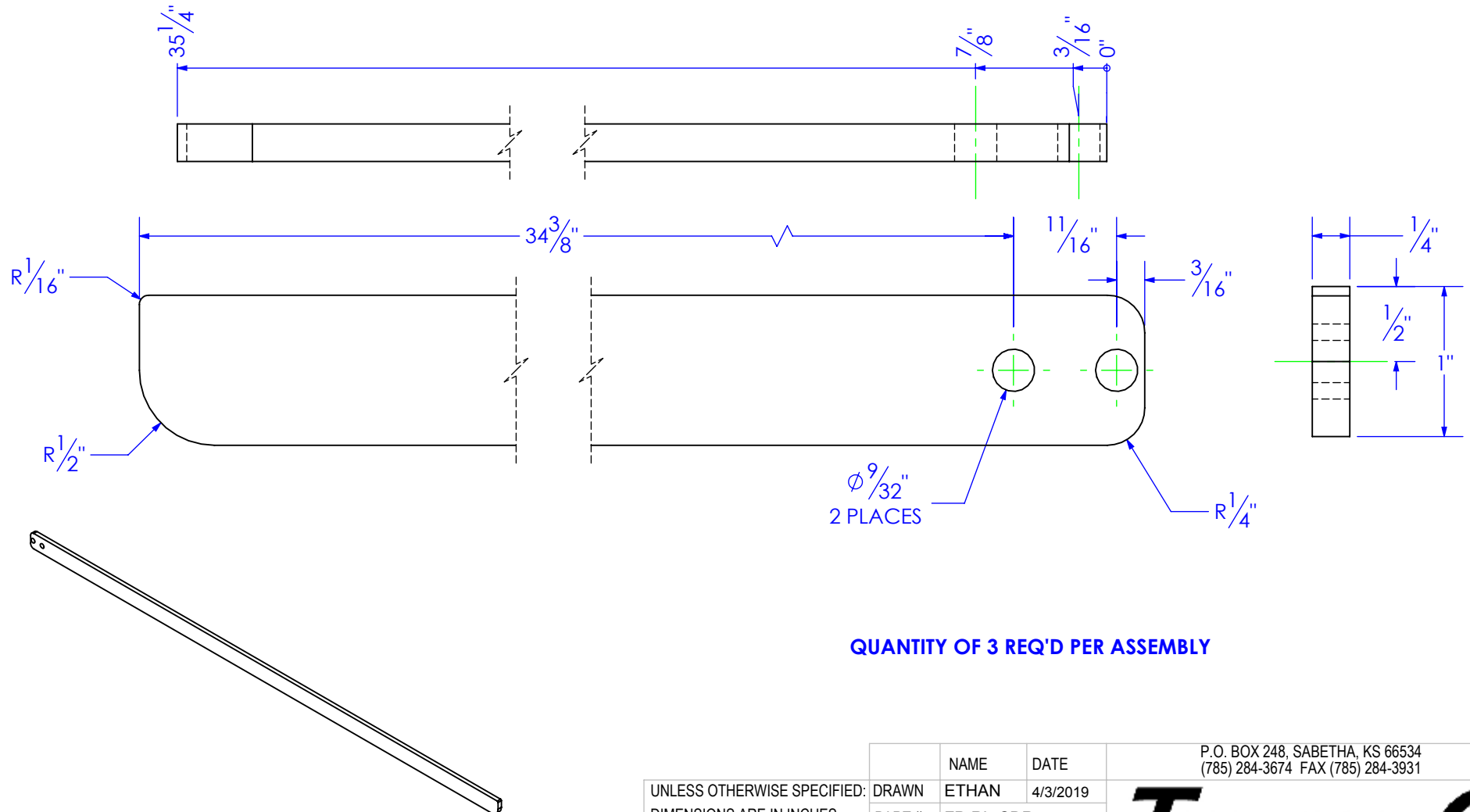


PART NUMBER	DESCRIPTION	MATERIAL
FP-RL-CDR	CYLINDER DOOR RAIL 1/4x1x35-1/4, REEL LIFT	1/4" HRS.

REVISIONS			
REV.	DESCRIPTION	DATE	APPROVED
A	INITIAL RELEASE	5/3/2017	
B	CHANGE PART NUMBER	3/20/2018	
C	REVISE RADIUS ON END	4/3/2019	




QUANTITY OF 3 REQ'D PER ASSEMBLY

PROPRIETARY AND CONFIDENTIAL
THE INFORMATION CONTAINED IN THIS
DRAWING IS THE SOLE PROPERTY OF TRIPLE
C INC. ANY REPRODUCTION IN PART OR
AS A WHOLE WITHOUT THE WRITTEN
PERMISSION OF TRIPLE C, INC IS PROHIBITED.

UNLESS OTHERWISE SPECIFIED:
DIMENSIONS ARE IN INCHES
TOLERANCES:
FRACTIONAL $\pm 1/16$
ANGULAR: MACH ± 1 BEND \pm
TWO PLACE DECIMAL $\pm .010$
THREE PLACE DECIMAL $\pm .005$

MATERIAL 1/4" HRS.

DO NOT SCALE DRAWING

	NAME	DATE	P.O. BOX 248, SABETHA, KS 66534 (785) 284-3674 FAX (785) 284-3931		
D: DRAWN	ETHAN	4/3/2019			
PART #	FP-RL-CDR				
ASM #	Asm #				
COMMENTS:					
CYLINDER DOOR RAIL 1/4X1X35-1/4, REEL LIFT			SIZE A	DWG. NO. 12-2214	REV C
			SCALE: 1:1	WEIGHT: 0.32	SHEET 1 OF 1